

# fladet<sup>®</sup> SERIES...

**DATA SHEET**

## IR EMBER DETECTOR

PART NO : IH153ES

OLD DWG. NO:DP-5.8/09-210

DATE:DEC.2024

REVISION :07

SCALE : N.T.S

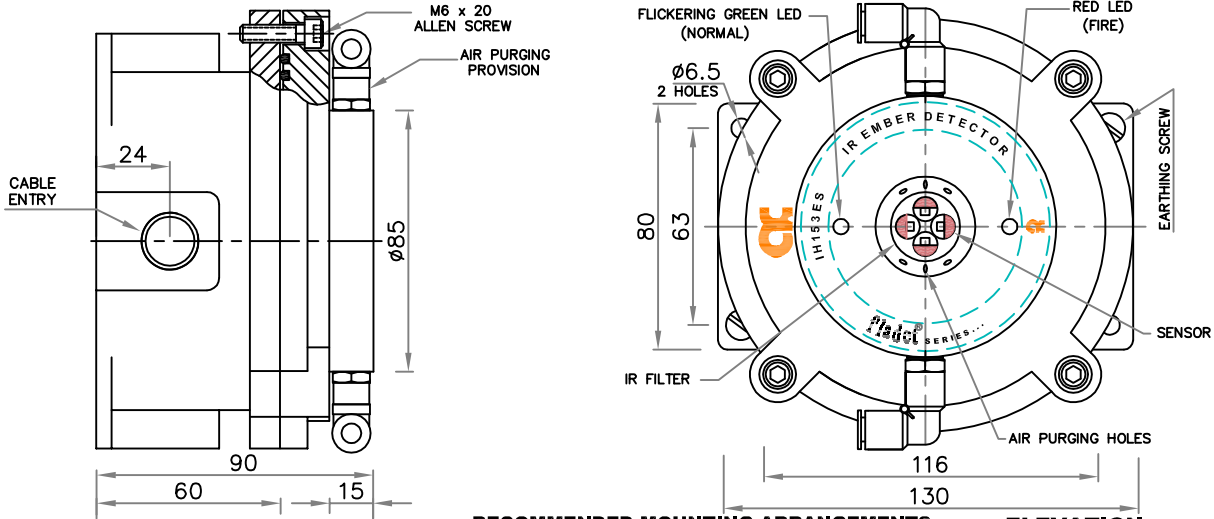
SHEET: 1 OF 1

APPD. BY :DBS

REV-05-MAR.2023: CE CERTIFICATE NO. UPDATED.  
 REV-06-AUG.2024: TECHNICAL SPECIFICATION IS UPDATED.  
 REV-07-DEC.2024: CE CERTIFICATE NO. UPDATED.

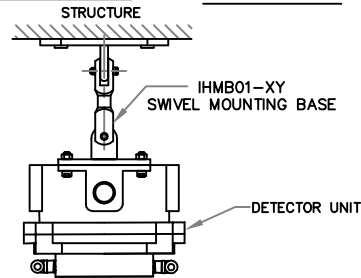
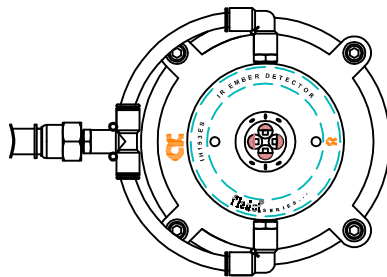
**INTRODUCTION :-**

IR EMBER DETECTOR WITH IP 67 ENCLOSURE. THE DETECTOR CAN DETECT EMBER. WIDELY RECOMMENDED TO USE IN COAL CONVEYOR PROTECTION. THE DETECTOR CAN BE CONNECTED TO FIRE ALARM PANEL / ANNUNCIATION PANEL / PLC USING SUITABLE POTENTIAL FREE CONTACTS. THE DETECTOR IS PROVIDED WITH SENSITIVITY SELECTION SWITCH.  
 NOTE : THIS DATASHEET CAN BE ALSO REFERRED AS DOC. NO: DP-5.8/CP-041



**RECOMMENDED MOUNTING ARRANGEMENTS**

**ELEVATION**



**NOTE :**

1. ALL DIMENSIONS ARE IN "mm" UNLESS OTHERWISE SPECIFIED.
2. TOLERANCE ON DIMENSION ± 3 mm, UNLESS OTHERWISE SPECIFIED.
3. \* CERTIFICATE NUMBERS MAY BE UPDATED AS PER LATEST REPORTS. \* REPRESENTS CERTIFICATE ISSUE NUMBER.

**TECHNICAL SPECIFICATION**

01.	MANUFACTURER AGNI CONTROLS – CHENNAI	18.	OUTPUT  <b>IH153ES-APFP</b> 1. ONE SET OF NO-COM-NC CONTACT FOR FIRE PLUS ONE SET OF DUPLICATE NO-COM-NC CONTACT. 2. ONE SET OF NO-COM-NC CONTACT FOR FAULT PLUS ONE SET OF DUPLICATE NO-COM-NC CONTACT. 3. ZONE DETECTOR LINE TO CONNECT DIRECTLY STANDARD CONVENTIONAL FIRE ALARM PANEL. 4 RANGE OF SELECTIONS VERY HIGH SENSITIVITY – 1 HIGH SENSITIVITY – 2 NORMAL SENSITIVITY – 3 (DEFAULT SETTING) LOW SENSITIVITY – 4
02.	TECHNICAL SUPPORT EU MAKE COMPONENTS	18a.	SENSITIVITY SELECTION VERY HIGH SENSITIVITY – 1 HIGH SENSITIVITY – 2 NORMAL SENSITIVITY – 3 (DEFAULT SETTING) LOW SENSITIVITY – 4
03.	MODEL NO. APFP-T2060	19.	RELAY CONTACT RATING 1A AT 125V AC, 2A AT 30V DC
04.	MATERIAL CAST ALUMINIUM LM6	20.	APPROVAL / CONFORMATION / CERTIFICATION 1.CE CERTIFICATE NO.ET/EMC/2022/13355* 2.IP PROTECTION CERTIFIED BY ETDC 3.CONFORMING REQUIREMENT NFPA 72E. & FM3260 4.CONFORMING REQUIREMENT OF IS-2189.
05.	FINISH ENCLOSURE- HAMMER TONE GRAY		
06.	CABLE ENTRY 3/4" ET/ M20X1.5 – 3NOS		
07.	PROTECTION CLASS IP 67		
08.	SENSING ELEMENT INFRA RED		
09.	SPECTRAL FILTER 3000 – 14000 nm		
10.	EXTERNAL EARTHING 2 Nos.-M6		
11.	FASTENERS SS 304		
12.	OPERATING TEMPERATURE -20°C TO +60°C		
13.	SUPPLY SUPPLY 24V DC ± 20%,		
14.	QUIESCENT CURRENT < 40mA		
15.	ALARM CURRENT < 120mA		
16.	DETECTOR SENSITIVITY 100 SQ.CM EMBER @ 1 TO 3 METER IN 90 DEG. CONE ANGLE & STRAIGHT LINE AT NORMAL SENSITIVITY..		
17.	INDICATION NORMAL – FLICKERING GREEN LED FIRE – RED LED		

**IMPORTANT:**

AGNI CONTROLS RESERVES THE RIGHT TO CHANGE OR MODIFY WITHOUT PREVIOUS NOTICE ANY DATA OR SPECIFICATION DUE TO CHANGES OR MODIFICATION IN ORDER TO IMPROVE THE PRODUCTS/SYSTEM PRESENTED.



**AGNI CONTROLS  
CHENNAI**

NO.1, 6TH STREET, Dr.SUBBARAYAN NAGAR,  
KODAMBAKKAM, CHENNAI-600 024, INDIA.

PHONE : +91 44 2481 2420,

E-MAIL : engineering@agnicontrols.com WEBSITE : www.balafire.com

**ISO 9001 - 2015  
CERTIFIED COMPANY**