

IH151-MASTER ALARM CONTROL PANEL

This is a specially designed control panel operates that on 230V AC. Alternatively 24V DC input supply provision also available. Potential free 'NO' contact from pressure switch of cylinder or tube or any other signal initiating device is used in this panel to initiate fire indication and Dual Tone hooter sound.

APPLICATIONS

1. This Alarm Control Panel can be used in pneumatic detection tube system to initiate alarm and remote indication.
2. This alarm Control Panel can be used as discharge indication and alarm unit in gas extinguishing system.
3. This Alarm Controls Panel can be used as alert indication and alarm for various input signals like low weight, limit switch, operation etc.

FEATURES

Panel has following control switch, Visual & Audio Indicator

- > Panel ON or OFF switch.
- > ACKNOWLEDGE push to on Switch.
- > panel 'ON' status GREEN LED.
- > Fire status dual RED LED.
- > Dual tone Buzzer to indicate fire status.



TECHNICAL SPECIFICATION

| | | | | | |
|-----|------------------|---|----|---------------------|--|
| 01 | CONSTRUCTION | (20 SWG) C.R. SHEET | 07 | CURRENT CONSUMPTION | 24 WATTS |
| 02 | FINISHING | RED | 08 | INDICATION | GREEN LED 'ON' RED LED DUAL LED FLASHING TYPE |
| 03 | CABLE ENTRY | BOTTOM & TOP ENTRY - Ø19mm KNOCK OUT | 09 | TYPE OF TONE | DUAL TONE, 90<100dB AT 1 METRE DISTANCE |
| 04 | TYPE OF MOUNTING | WALL MOUNTED | 10 | OUTPUT | 1 SET OF POTENTIAL FREE NO NC COM ONLY |
| 05 | DIMENTION | (105 X 190 X 80) mm | 11 | CONTACT RATING | 1A / 120V AC & 2A / 24V DC |
| 06. | INPUT SUPPLY | 230V AC ± 10% (OR) 24V DC | | | |

OPERATION:

When switch is ON, power ON green LED will glow. If potential free NO contact from pressure switch or any other signal initiating device is turned to NC mode, dual FIRE RED LED flashes and dual tone fire hooter will be 'ON'.

To acknowledge or silence - Acknowledge push to ON switch is to be used. When acknowledge switch is operated, then panel hooter will be silence and flashing RED LED will glow constantly.

RESET by putting panel ON switch in OFF position, If 'NC' mode of signal initiating device say pressure switch, is not changed to 'NO mode, then when panel switch is 'ON', Fire dual LED & Fire Hooter will be 'ON' again as explained above.

There is one set of potential free NO NC COM contacts are provided to use for remote operation.

INSTALLATION PROCEDURE

1. Remove four screw of top cover (Refer Fig.1)
2. Take back box. Fix back box firmly in vertical position (Refer Fig.1) using mounting hole (Refer Fig.2.)
3. Provide either 230V AC or 24V DC Supply as shown in Fig.3
4. TB 8 and TB 9 are input potential free contact to initiate fire condition.
5. When push button ON/OFF switch is 'ON' condition, green LED will 'ON'
6. During FIRE (when signal from pressure switch 'NO' to 'NC') dual tone alarm will 'ON' and dual FIRE RED LED will flashes.

TESTING

- a) Short TB 8 & TB 9 to check function of FIRE RED LED and HOOTER.
- b) Observe:
 - (i) 'ON' and dual FIRE RED LED will flashes.
 - (ii) Dual tone hooter 'ON'
- c) When acknowledge switch is pressed,
 - (i) Dual FIRE RED LED will glow constantly
 - (ii) Dual tone hooter 'OFF'

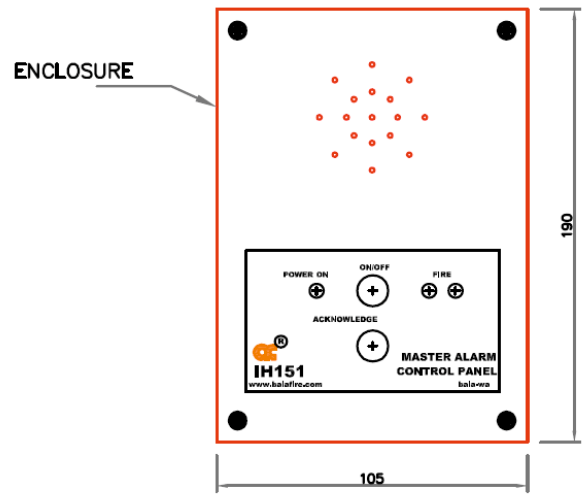
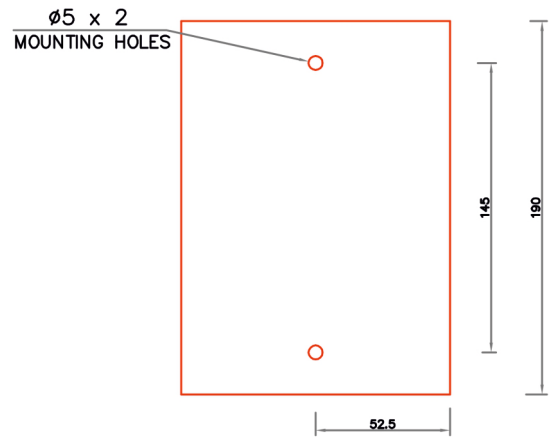


Fig. 1



BACK VIEW

Fig. 2

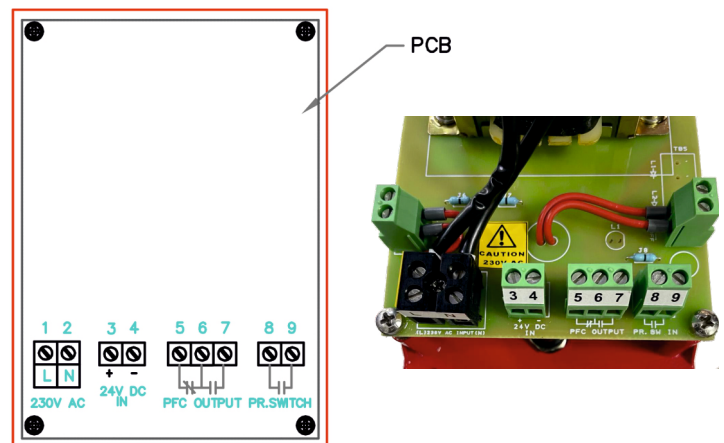


Fig. 3